



2022 | BREWERY FITTINGS PRICE LIST



Valves | Adapters | Ports



Pricing Effective December 10, 2021

Prices subject to change without notice.



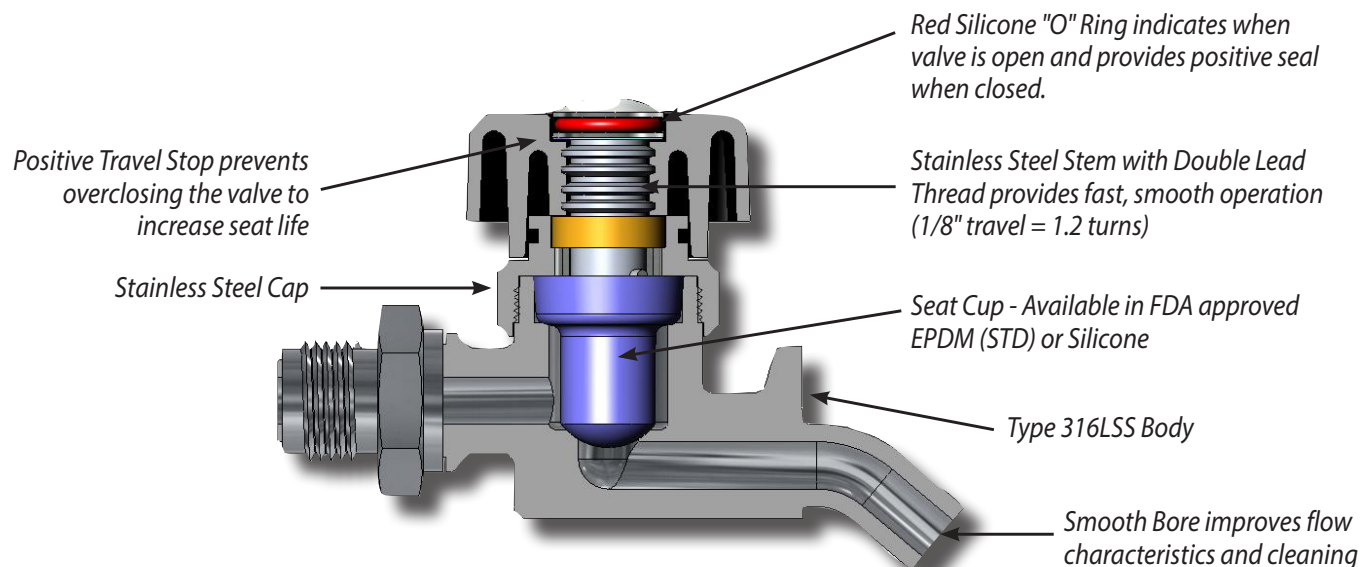
perlick.com



SAMPLING VALVES

Available with Sanitary Thread, Male Taper Pipe Thread, Tri-clamp Ends, or 1/2" Butt Weld and **your choice of a Molded Black Handle or Solid Stainless Steel Handle.**

PERFORMANCE ENHANCING FEATURES

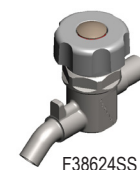
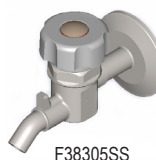


Max Pressure Rating 150 P.S.I.G. (closed position)

For Product Sampling Only

Bacteria-proof Thread		
Part No.	Description	List Price
F38300SSBLK	Sample Valve w/Black Handle and bacteria-proof thread	\$169.00
F38300SS	Sample Valve w/Stainless Handle and bacteria-proof thread	\$179.00
F11284-1	Fibre Washer	\$0.35

Tri-Clamp		
Part No.	Description	List Price
F38304SSBLK	Sample Valve w/Black Handle and 1/2" Tri-Clamp end	\$203.00
F38304SS	Sample Valve w/Stainless Handle and 1/2" Tri-Clamp end	\$215.00
F38305SSBLK	Sample Valve w/Black Handle and 1-1/2" Tri-Clamp end	\$207.00
F38305SS	Sample Valve w/Stainless Handle and 1-1/2" Tri-Clamp end	\$217.00
F38306SSBLK	Sample Valve w/ Black Handle and 2" Tri-Clamp end	\$215.00
F38306SS	Sample Valve w/Stainless Handle and 2" Tri-Clamp end	\$224.00



Male Pipe Thread		
Part No.	Description	List Price
F38301SSBLK	Sample Valve w/Black Handle and 1/8" male NPT	\$155.00
F38301SS	Sample Valve w/Stainless Handle and 1/8" male NPT	\$164.00
F38302SSBLK	Sample Valve w/Black Handle and 1/4" male NPT	\$155.00
F38302SS	Sample Valve w/Stainless Handle and 1/4" male NPT	\$164.00
F38303SSBLK	Sample Valve w/ Black Handle and 3/8" male NPT	\$155.00
F38303SS	Sample Valve w/Stainless Handle and 3/8" male NPT	\$164.00

1/2" Butt Weld End		
Part No.	Description	List Price
F38624SSBLK	Sample Valve w/Black Handle and 1/2" OD 16 gauge Butt Weld End	\$179.00
F38624SS	Sample Valve w/Stainless Handle and 1/2" OD 16 gauge Butt Weld End	\$190.00

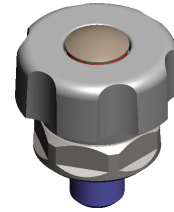


Replacement Parts for ALL VALVES

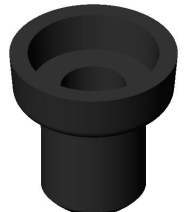
Part No.	Description	List Price
F38252	Bonnet Assembly, Black Handle	\$75.10
F38252SS	Bonnet Assembly, Stainless Handle	\$85.70
F38229-1	EPDM Seat Cup	\$4.50
F38229-2	Silicone Seat Cup	\$4.35
F38230-1	Silicone "O" Ring	\$0.85



F38252



F38252SS



F38229-1



F38230-1



F38250SS



F38459-1SS

Accessories for ALL VALVES

Part No.	Description	List Price
F38250SS	Wrench	\$11.15
F38459-1SS	Heat Shield	\$13.25
F38244SS532	Capping Device	\$105.00
F38245SS532	Locking Capping Device	\$106.00
F2272SS540	5 Turn Proof Coil (pigtail)*	\$235.00
F2272HSS540	15 Turn Proof Coil (pigtail)*	\$251.00
F1260	Gasket (pigtail)	\$0.60

***NOTE:** 5 Turn Proof Coil (shown right) and 15 Turn Proof Coil are in stock. Others are available upon application.



F38244SS532



F38245SS532



F2272SS540



F16363SS540



F16364SS540



F38462SS540

SS Sample Valve Attachment for 3/8" I.D. Hose

Part No.	Description	List Price
F16363SS540	Attachment, points down - 3/8" I.D. Hose	\$177.00
F16364SS540	Attachment, points up - 3/8" I.D. Hose	\$257.00
F38462SS540	Attachment, 1/4" I.D. Hose	\$257.00



F1005-1SS540



F34808SS540

Sample Valve Attachment with 1/4" Female N.P.T.

Part No.	Description	List Price
F1005-1SS540	Attachment, points up	\$219.00
F34808SS540	Attachment, points down	\$210.00



1013963

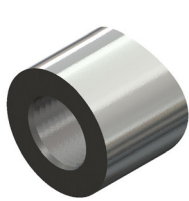
Keg Sampler

Part No.	Description	List Price
1013963	Keg Sampler	\$ 430.00

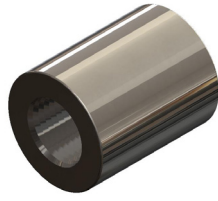


WELD-IN TANK ADAPTERS

316LSS Sampling Valve Tank Adapters for F38300SS and F38300SSAMBER Sampler Valves.



Contoured Sampling Valve
Tank Adapter



Flat Back Sampling Valve
Tank Adapter

CONTOURED to fit schedule 5 pipe from 1-1/2" through 10" sizes.

Part No.	Size	List Price
F23847-1SS540	1-1/2"	\$54.10
F23847-2SS540	2"	\$54.10
F23847-3SS540	2-1/2"	\$54.10
F23847-4SS540	3"	\$54.10
F23847-6SS540	4"	\$54.10
F23847-8SS540	6"	\$54.10
F23847-9SS540	8"	\$101.00
F23847-10SS540	10"	\$197.00

FLAT BACK Adapter - No Contour

Part No.	List Price
F32428-2SS540	\$ 40.90

CLAMP TYPE Adapter

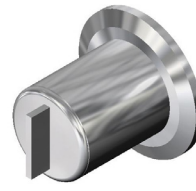
Part No.	List Price
F1572SS588	\$ 184.00

Relief Valve Replacement Parts

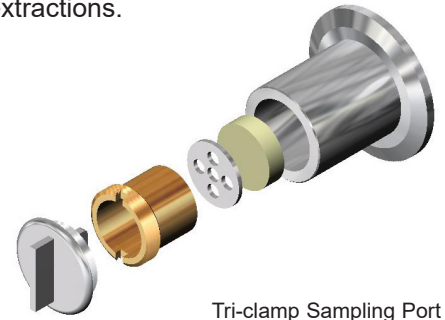
	Part No.	Description	List Price
A	F1732A508	Breaking Bar Rating Per Equipment	CALL
B	F18450-2-507	Bar Holder (2)	\$40.90
C	F1723-507	Pins (4)	\$12.65
D	F1715A503	Body	\$364.00
E	F2109	Bead Ring	\$6.75
F	F1722	Diaphragm	\$13.25
G	F38360-1	Keeper Ring	\$1.95
H	F2108	Seal Wire <i>(not shown above)</i>	\$2.75

TRI-CLAMP SAMPLING PORT

For use with needle extractions.



Tri-clamp
Sampling Port



Tri-clamp Sampling Port
(exploded view)

SAMPLING PORTS

Part No.	Description	List Price
F28312SS590	Sampling Port w/ 1-1/2" Tri-Clamp end	\$536.00
F27141SS590	Sampling Port w/ 2" Tri-Clamp end	\$1,048.00

